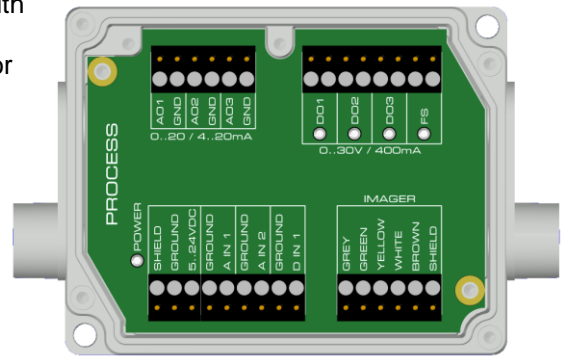


Technical Note

Industrial Process Interface for optris PI series and Xi 400

For use in industrial environment an industrial process interface with 500 VAC_{RMS} isolation voltage between imager and process is available (connection box with IP65, 5 m, 10 m or 20 m standard or high temp cable for camera connection, terminal for process integration).



Pin assignment PIF cable (industrial process interface)

| | |
|--------|------------------------|
| GREY | Interrupt |
| GREEN | SCL (I ² C) |
| YELLOW | SDA (I ² C) |
| WHITE | 3,3 V |
| BROWN | GND |
| SHIELD | GND |

The industrial process interface offers the following inputs and outputs:

| Name | Description | max. range ¹⁾ / status |
|-------------|---------------------------------------|--|
| A IN 1 / 2 | analog input 1 and 2 | 0-10 V |
| D IN 1 | digital input | 24 V |
| AO1 / 2 / 3 | analog output 1, 2 and 3 | 0/4-20 mA |
| | alarm output 1, 2 and 3 | 0/4-20 mA |
| DO1 / 2 / 3 | relay output 1, 2 and 3 ²⁾ | open/ closed (red LED on) / 0...30 V, 400 mA |
| FS | fail-safe relay | open/ closed (green LED on) / 0...30 V, 400 mA |

¹⁾ depending on supply voltage

²⁾ active if AO1, 2 or 3 is/ are programmed as alarm output

The process interface has an integrated fail-safe mode. This enables a complete monitoring of the imager hardware and software like interruption of cables, shut-down of the software etc.

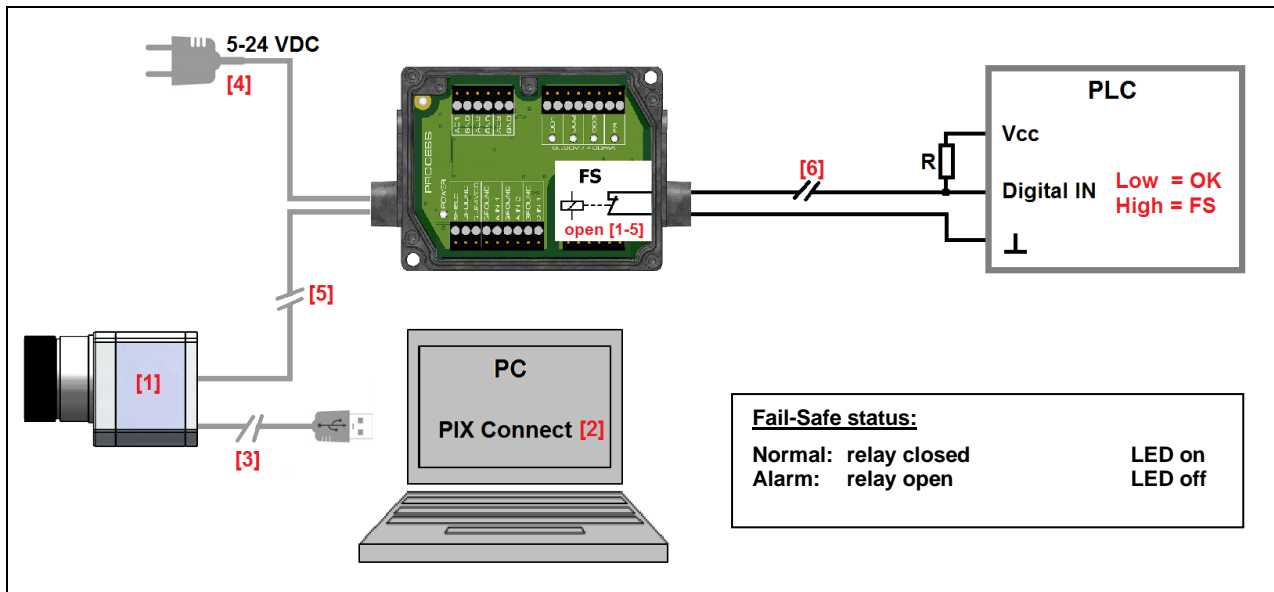
The PIF has a separate fail-safe relay output (0-30 V/ 400 mA).

| Controlled conditions on camera and software | Industrial Process interface ACXIPIFCBxx |
|--|---|
| Interruption USB cable to camera | ✓ |
| Interruption data cable camera – PIF | ✓ |
| Interruption power supply PIF | ✓ |
| Shut-down of software | ✓ |
| Crash of software | ✓ |
| Fail-Safe output | Open contact (Fail-safe relay) / red LED on |

TN-Industrial Process Interface (PIF) for optris PI series & Xi 400_2024-08-A

Technical Note

Example for a Fail-Safe monitoring of the PI with a PLC



Fail-Safe monitoring states

- [1] Malfunction of PI
- [2] Malfunction of PIX Connect software
- [3] Breakdown of PI power supply/ Interruption of USB cable
- [4] Breakdown of PIF power supply
- [5] Interruption of cable PI-PIF
- [6] Cable break of fail-safe cable